

- [Home](#)
- [Selected Works](#)
- [AD Software](#)
- [Books & Magazines](#)
- [AD Classics](#)
- [Interviews](#)
- [Building of the Year 2011](#)

- [Advertise](#)
- [Contact / Submit Works](#)
- [About](#)

Welcome, Guest! [Sign In](#) » [Register](#) »



Me gusta A 534.214 personas les gusta esto.

New Civil Guard Barracks House in Oropesa del Mar / espejel-fisac arquitectos

01 Jun 2012
Filed under: [Featured](#) , [Housing](#) , [Selected](#) , [espejel-fisac arquitectos](#) , [Oropesa del Mar](#) , [Spain](#)

[Bookmark](#)

▼
Add this to My Bookmarks:

Or add to a new folder +

-
- [Like](#)
- |
- [share by email](#)

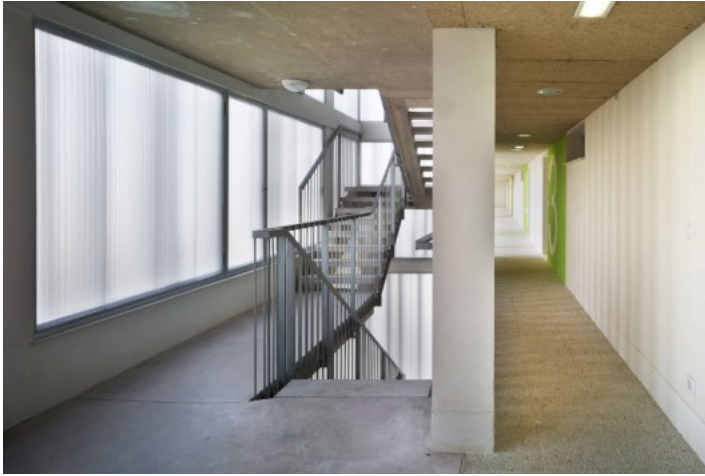
[Favorite](#)

- [Like](#)
- [Tweet](#)
- [share by email](#)



© David Frutos

Architects: [espejel-fisac arquitectos](#)
 Location: **Oropesa del Mar**, [Spain](#)
 Project Architects: **Carmen Espejel Alonso & Concha Fisac de Ron**
 Project Team: **Cristina Hernández vicario, Laia Lafuente García-Valdecasas, Syra Abella Bule, Daniel Merro Jonhston, Federico Colella**
 Project Area: **4,146.29 sqm**
 Project Year: **2009-2011**
 Photographs: [David Frutos](#)



© David Frutos

The building is organized in two pieces, shaping an L that defines the access square opened to Plana Avenue, being the natural way to the roads that are approaching from the urban center. The access from the square is common to the official buildings and housing, setting up one only entry point. The square is paved and gardened with palm trees.



© David Frutos

One of the pieces accommodates the official buildings; the other, more complex, the housing. Both are joined by an exterior vertical communications core, formed by lift and stairs, and working as the access to the high level housing and also as an alternative and emergency way for the official part.



© David Frutos

The residential part gives its back to the square, looking for the sun. The familiar houses are organized in the two low levels, two separated lines by an opened access corridor. Each house is disposed as an L, generating a private courtyard to

which views and ventilation are directed to, with a southeast orientation.



© David Frutos

To the high floors apartments, faced to the south and the sea, the access is through the exterior communication core that is the joint of the two pieces located in the corridor opened to the square. Above the housing line, the apartment block is elevated upright by pilotis. Thereby, an external elevated public space is generated for recreation and leisure areas of the residents.



planta 1ª viviendas



planta baja viviendas y oficinas

plan 01

The official part is organized in clearness and compactness, equally disposed around a courtyard, favoring the location of the public uses in the ground floor, more accessible. The architecture makes reference to the usual mediterranean character of the place, simple volumes, well faced courtyards, solar protections and flat roof. The light control and the privacy are solved by GRC lattice that helps the cross ventilation in both type buildings optimizing the bioclimatic behavior of the complex.



© David Frutos



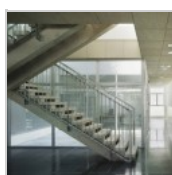
© David Frutos



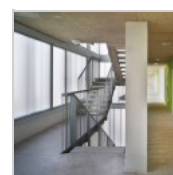
© David Frutos



© David Frutos



© David Frutos



© David Frutos



© David Frutos



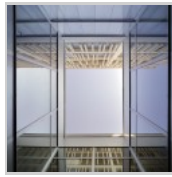
© David Frutos



© David Frutos



© David Frutos



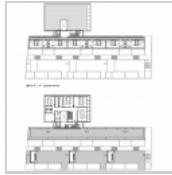
© David Frutos



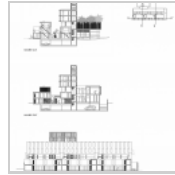
© David Frutos



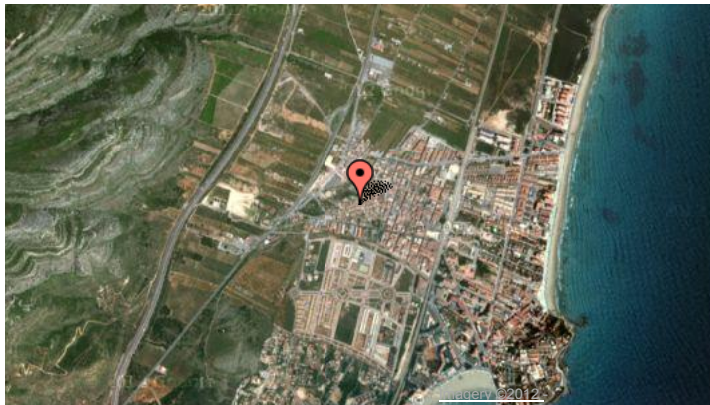
plan 01



plan 02



sections



* Location to be used only as a reference. It could indicate city/country but not exact address.

Cite: King, Victoria. "New Civil Guard Barracks House in Oropesa del Mar / espejel-fisac arquitectos" 01 Jun 2012. [ArchDaily](http://www.archdaily.com/238692). Accessed 07 Jun 2012. <<http://www.archdaily.com/238692>>

Recommended:



Ibermutuamur Building / DENORTE



Palmaret-Alboraya Train Station / Rstudio



Café del Arco / Clavel Arquitectos



Casanueva Pharmacy / Clavel Arquitectos

- [Comments \(1\)](#)
- [Tweets \(16\)](#)